

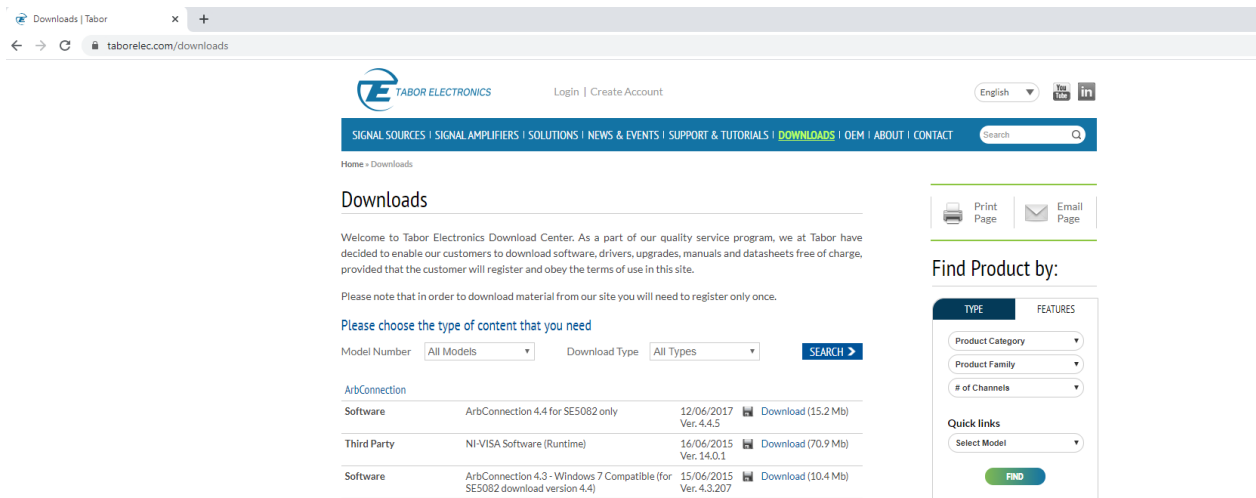
How to Simply Connect WW, WS & PM Series via USB

This paper provides instructions on how to simply **connect to TABOR ELECTRONICS devices** via their USB port. The following devices are covered in this document.

- ❖ Entire WW series (WW5061/2/4, WW1071/2/4, WW2571/2A, WW2571/2, WW2074, WW1281, WW1281A).
- ❖ PM8571/2 (none "A").
- ❖ WS8101/2, WS8251/2 (excluding WS835x models).

➔ To connect the Tabor unit via the USB port:

1. First, you will have to install [NI-VISA](#) from National Instruments website.
2. Install the USB device driver, which can be accessed either on the CD-ROM disk provided with your Tabor device, or from Tabor Electronics web site at <http://www.taborelec.com/>.
3. To download the driver from our web site, click on **Downloads**, and select the model from the **Model Number** drop-down box, and select "Drivers" from the **Download Type** drop-down box. Click on the **Search** button.



The screenshot shows the 'Downloads' page on the Tabor Electronics website. The page has a header with the company logo, navigation links, and a search bar. The main content area is titled 'Downloads' and includes a welcome message and a note about registration. Below this, there are filters for 'Model Number' (set to 'All Models') and 'Download Type' (set to 'All Types'), followed by a 'SEARCH' button. A table lists available downloads:

Category	Item	Version	Download Link
ArbConnection	ArbConnection 4.4 for SE5082 only	12/06/2017 Ver. 4.4.5	Download (15.2 Mb)
Third Party	NI-VISA Software (Runtime)	16/06/2015 Ver. 14.0.1	Download (70.9 Mb)
Software	ArbConnection 4.3 - Windows 7 Compatible (for SE5082 download version 4.4)	15/06/2015 Ver. 4.3.207	Download (10.4 Mb)

On the right side of the page, there is a 'Find Product by:' section with dropdown menus for 'Product Category', 'Product Family', and '# of Channels', along with a 'Quick links' section containing a 'Select Model' dropdown and a 'FIND' button.

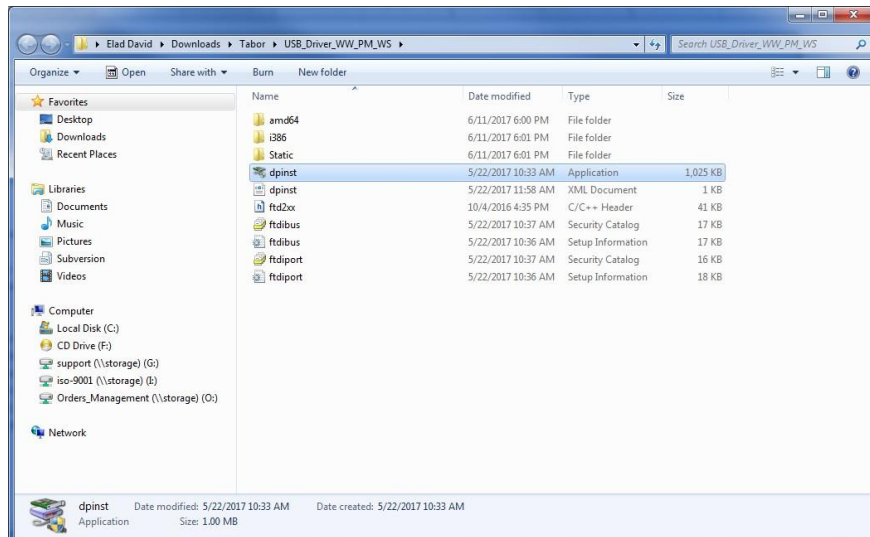
Download & unzip the USB driver installation to your PC/laptop.

4. Connect your computer to the device using a USB cable. To activate the USB interface, access the **Select Interface** screen from the **Top Menu->> Utilities ->> Remote Setup** menu, select the **USB** option, and press **ENTER**.

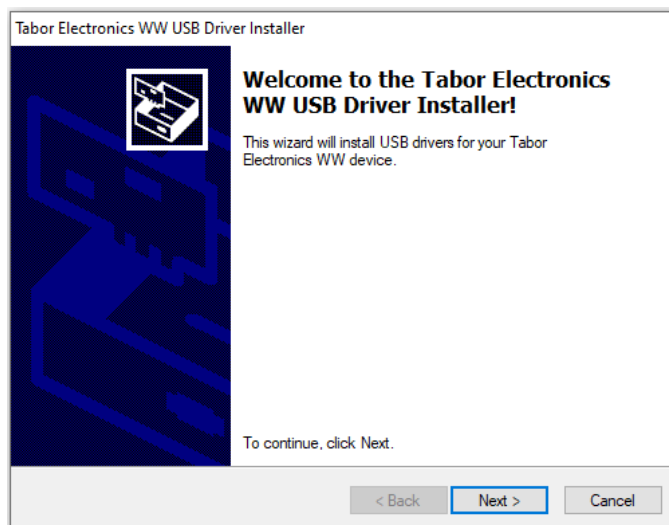


5. Installation of the USB driver:

- a. Once you unzipped the USB driver folder, double click on 'dpinst.exe' as can be seen below:



- b. A new dialog box will open, click 'Next':



- c. Once it finishes, click 'Finish':

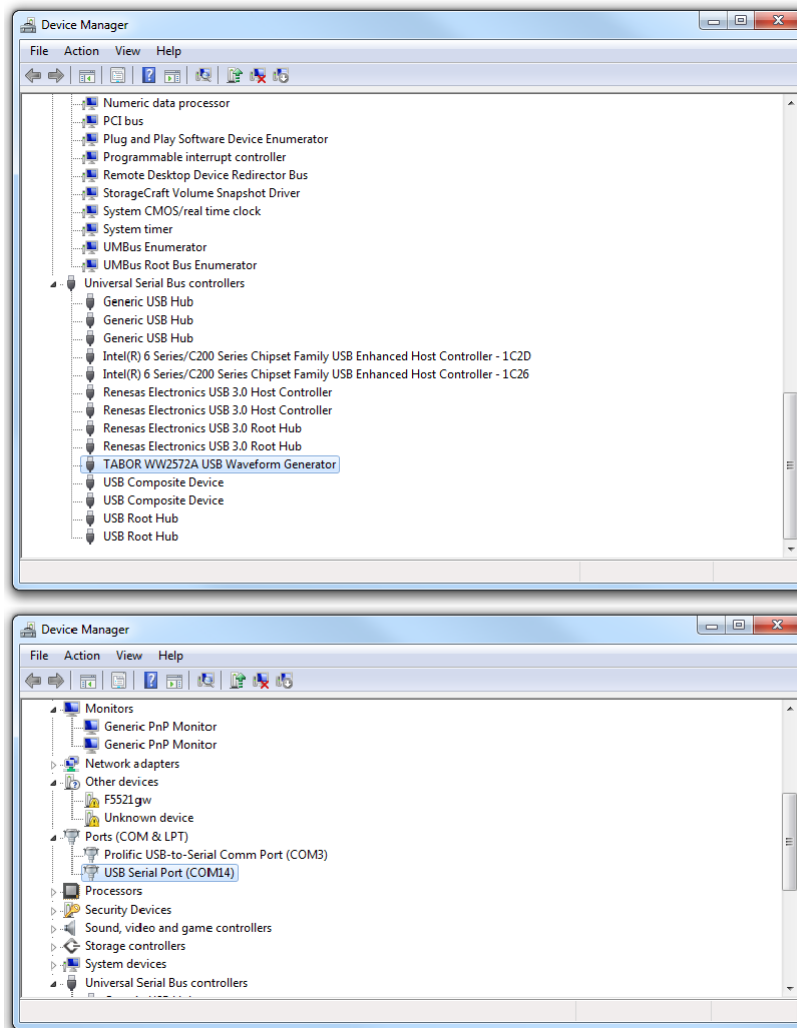


In case you are missing a driver signature, please look on the web for instructions how to disable driver signature enforcement on your specific OS. Here is an example for WIN 10:

- I. Press and hold the Shift key on your keyboard and click the Restart button.
- II. Choose Troubleshoot->>Advanced Options->>Startup Settings & click the Restart button.
- III. When your computer restarts, you'll see a list of options. Press F7 on your keyboard to select: **Disable driver signature enforcement.**
- IV. Your computer will reboot, repeat the USB driver installation procedure.

6. To make sure the device's USB settings are correctly configured, open your Device Manager (**Control Panel >> Hardware and Sound >> Devices and Printers >> Device Manager**) and compare the settings to the settings displayed in the windows below.

The Tabor USB driver installation should configure both the **TABOR USB Waveform Generator** under universal serial bus controllers & the **USB Serial Port** under ports, as can be seen below:



For More Information

If you encounter difficulties, please contact us at support@taborelec.com and our support team will gladly help. To learn more about Tabor's solutions or to schedule a demo, please contact your local Tabor representative or email your request to info@tabor.co.il. More information & tutorials can be found at our website at www.taborelec.com

© Proprietary of Tabor Electronics Ltd.